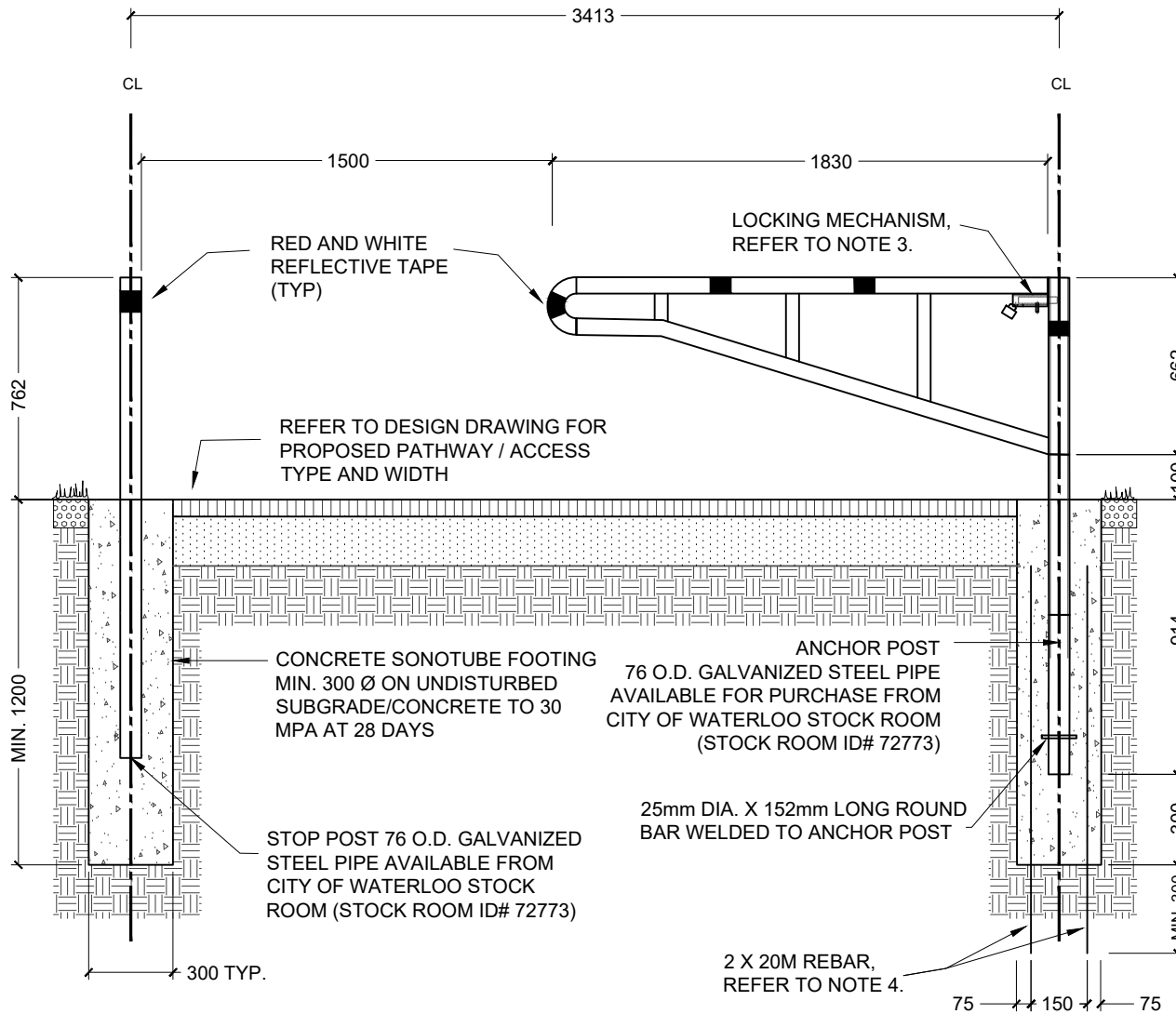


NOTES:

1. BOLLARD GATE, LOCK, AND STOP POST AVAILABLE FOR PURCHASE FROM THE CITY OF WATERLOO STOCK ROOM. PHONE 519-747-8752 TO ORDER.
2. IF THE GATE IS NOT BEING PURCHASED FROM THE CITY, SHOP DRAWINGS OF THE GATE MUST BE SUBMITTED AND APPROVED PRIOR TO FABRICATION.
3. LOCKING MECHANISM TO BE A BARREL AND PIN STILE, COMPLETE WITH AN ABUS PADLOCK.
4. GATE RESTS ON 76 O.D. GALVANIZED POST. SLEEVE INTO 89 O.D. GALVANIZED GATE SLEEVE. BOTH POSTS REQUIRE 300 CONCRETE SONOTUBE FOOTINGS. ANCHOR POST FOOTING REQUIRES 2 X 20M REBAR DRIVEN MIN. 300 BELOW FOOTING TO MITIGATE ROTATION OF SONOTUBE.
5. DO NOT INSTALL GATE ONTO ANCHOR POST UNTIL THE CONCRETE HAS PROPERLY CURED. CLEAN AND REINSTATE AREAS AFFECTED BY WORKS.
6. ALL SWING GATES TO BE INSTALLED ON RIGHT-HAND SIDE AT ENTRY AND AT LEAST 2500 IN FROM SIDEWALK EDGE AND 6000 IN FROM CURB EDGE. GATES TO SWING AWAY FROM ROADWAY
7. CURB CUT REQUIREMENTS AT THE ROAD TO BE CONFIRMED WITH CITY STAFF.
8. FOR MULTI-USE-PATH / TRAIL AND MAINTENANCE ACCESS DETAILS REFER TO THE CITY OF WATERLOO DWG. CW-501
9. NOT FOR WALKWAY BLOCKS.



ALL DIMENSIONS ARE IN MILLIMETERS UNLESS OTHERWISE SHOWN.

STANDARD DRAWING

REV 1

MAY 2023

**SINGLE 1.8m BOLLARD GATE DETAIL
3.0m & 4.0m WIDE PATHS / TRAILS**



CW-521