

**NOTES:**

1. DEMARCATION POST AVAILABLE FOR PURCHASE FROM CITY OF WATERLOO STOCK ROOM (STOCK ROOM ID# 72771). PHONE 519-747-8752 TO ORDER.
2. SEE CW-802 FOR LIVING FENCE AND DEMARCATION POSTS DETAIL.
3. DEMARCATION POSTS SPACED APPROX. 30 000 APART AND AT DIRECTIONAL CHANGE IN PROPERTY. AVOID PLACEMENT AT MIDPOINT OF LOT.

ALL DIMENSIONS ARE IN MILLIMETERS UNLESS OTHERWISE SHOWN.

**STANDARD DRAWING**

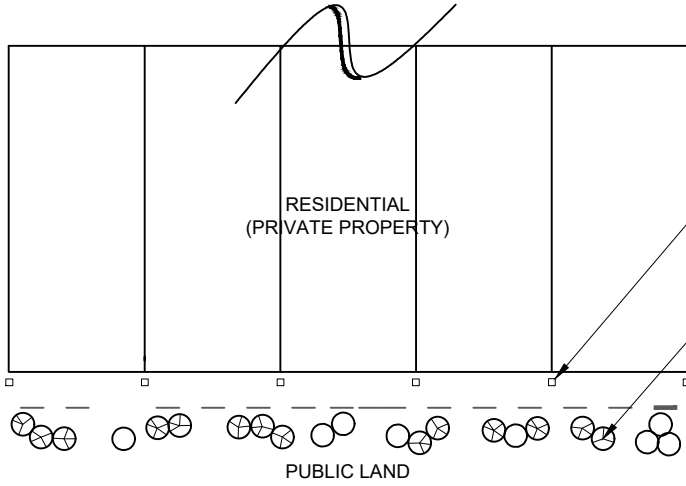
REV 1

MAY 2023

**PROPERTY DEMARCATION POST**

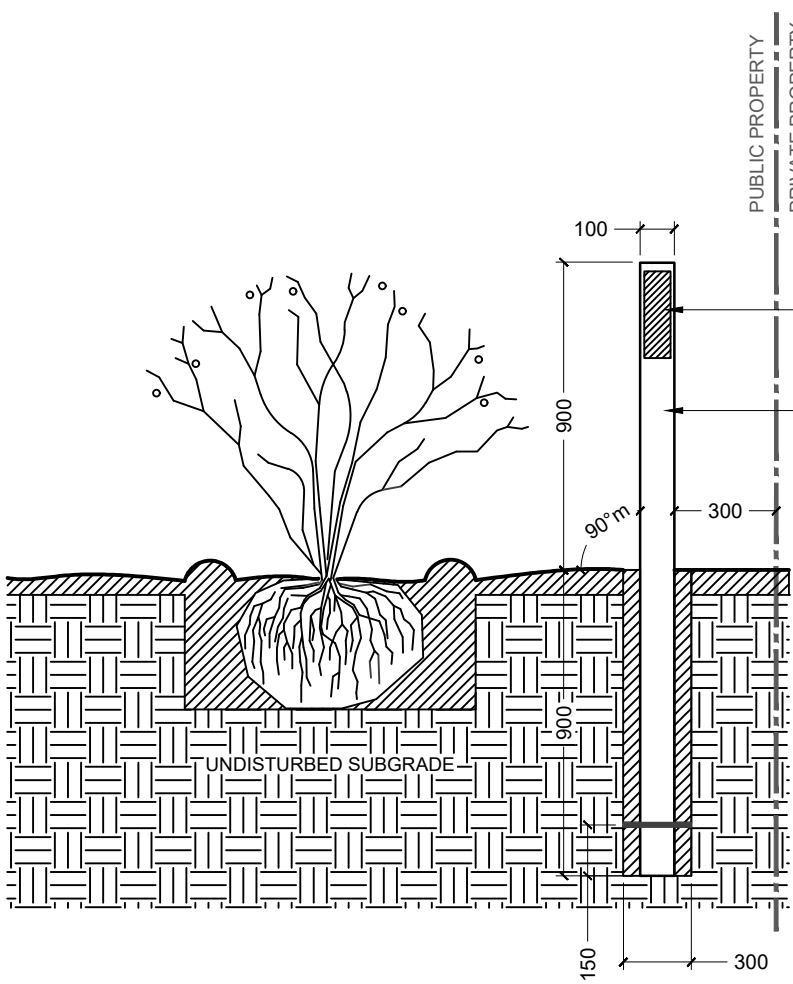


**CW-801**



DEMARCATION POSTS SPACED APPROX. 30 000 APART AND AT DIRECTIONAL CHANGE IN PROPERTY. AVOID PLACEMENT AT MIDPOINT OF LOT.

DEPENDING ON THE SPACE AVAILABLE A COMBINATION OF DECIDUOUS AND CONIFEROUS PLANTINGS AT VARYING HEIGHTS (750 - 1000)



CITY OF WATERLOO LOGO

DEMARCATION POST  
100 x 100 x 1800 PTP.  
AVAILABLE FOR PURCHASE FROM  
CITY OF WATERLOO STOCK ROOM (STOCK  
ROOM ID# 72771)

- NOTES:
1. ALL PLANT MATERIAL MUST BE NATIVE TO THE REGION OF WATERLOO AND MUST BE NON-INVASIVE.
  2. AT TIME OF PLANTING PLANT MATERIAL WILL NOT ENCROACH UPON PRIVATE PROPERTY.
  3. SEE PLANTING DETAILS (W-XXX TO W-XXX) FOR STANDARDS AND REQUIREMENTS.
  4. WHEN PLANTING WIDTH IS RESTRICTED TO LESS THAN 2000, LARGE PLANT MATERIAL WILL NEED TO BE OMITTED DUE TO GROWTH RESTRICTIONS.

ALL DIMENSIONS ARE IN MILLIMETERS UNLESS OTHERWISE SHOWN.

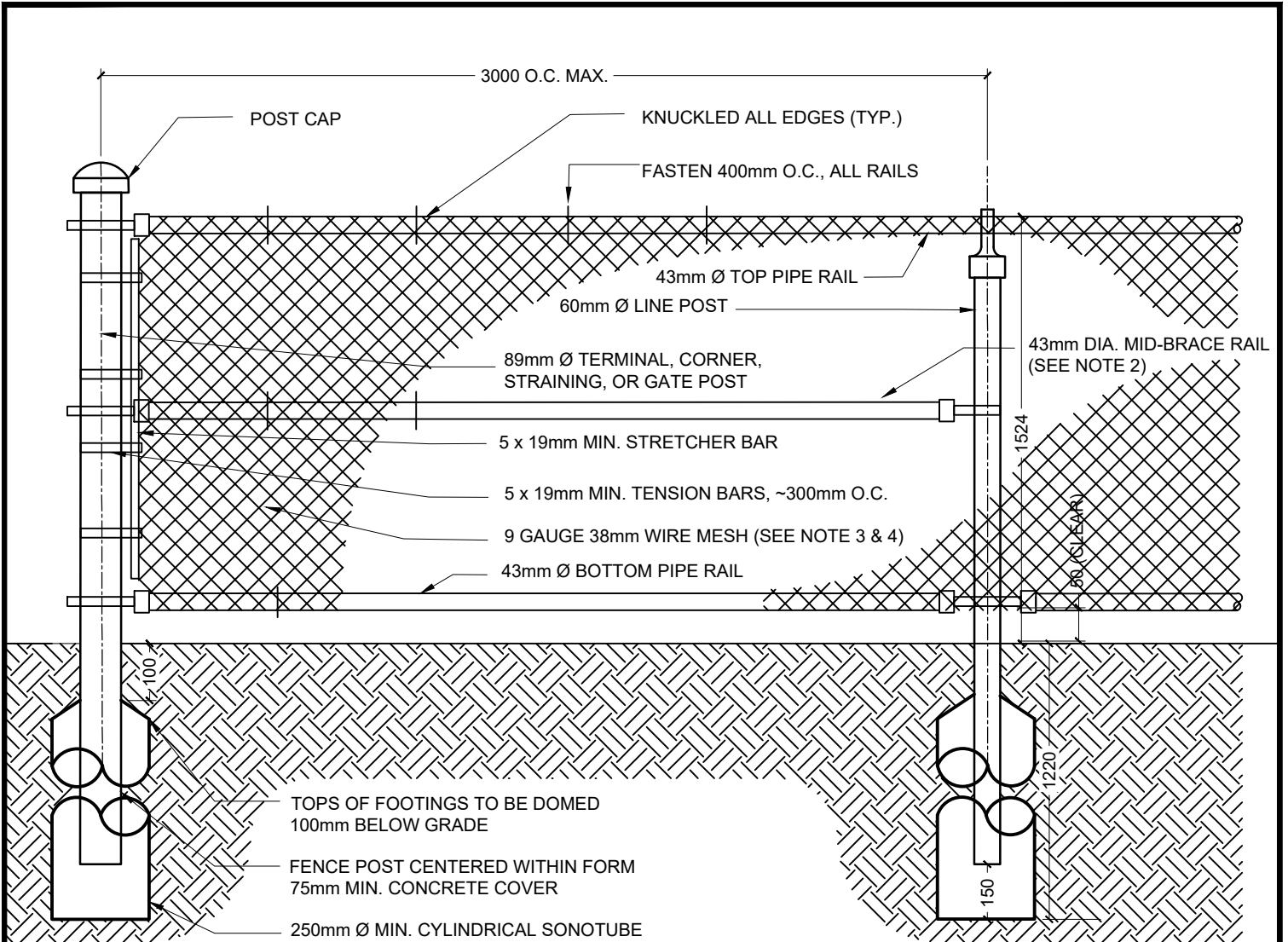
**STANDARD DRAWING**

REV 1      MAY 2023

**PROPERTY DEMARCATION POST  
AND LIVING FENCE**



**CW-802**



NOTES:

1. ALL FENCING MATERIALS, FASTENERS TO BE GALVANIZED PRIOR TO APPLICATION OF BLACK VINYL COATING.
2. MID-BRACE RAIL TO BE LOCATED EQUIDISTANT BETWEEN TOP AND BOTTOM RAIL ON TERMINAL, CORNER, STRAINING, OR GATE POSTS.
3. WIRE MESH SHALL BE INSTALLED ON THE MUNICIPAL SIDE OF THE FENCE POSTS.
4. WIRE MESH SHALL BE MEASURED AT 9 GAUGE PRIOR TO GALVANIZING AND BLACK VINYL COATING.
5. CONCRETE FOOTINGS TO BE 20MPa STRENGTH AT 28 DAYS
6. ALL PIPE TO BE SCHEDULE 40.
7. CONFIRM GRADING PRIOR TO FENCE INSTALLATION.
8. 50MM CLEARANCE, FROM THE BOTTOM RAIL AND WIRE MESH TO FINISHED GRADE, IS TO BE CONSISTENT ALONG THE ENTIRE LENGTH TO FACILITATE MAINTENANCE.

ALL DIMENSIONS ARE IN MILLIMETERS UNLESS OTHERWISE SHOWN.

**STANDARD DRAWING**

REV 1      MAY 2023

**CHAINLINK FENCE DETAIL**



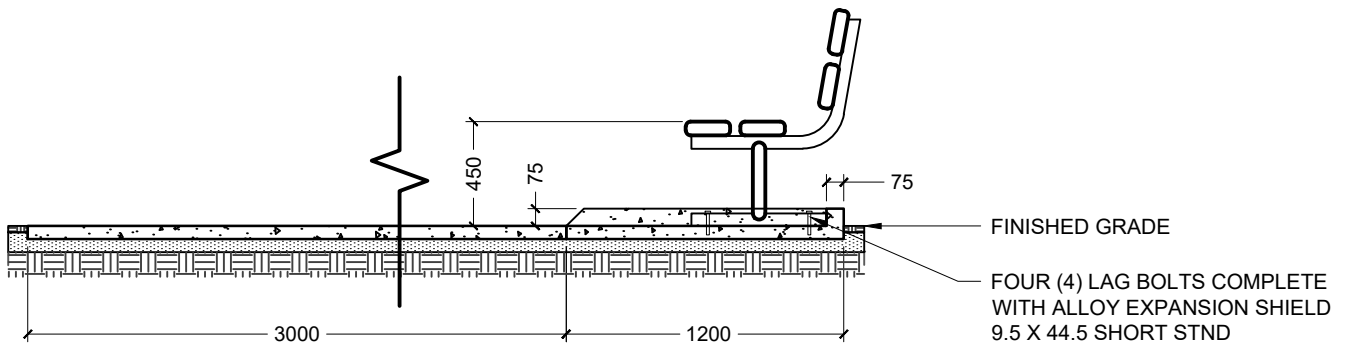
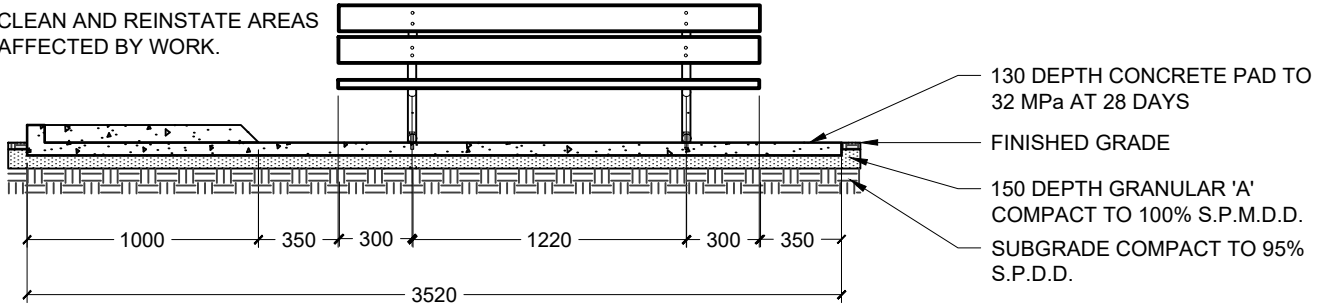
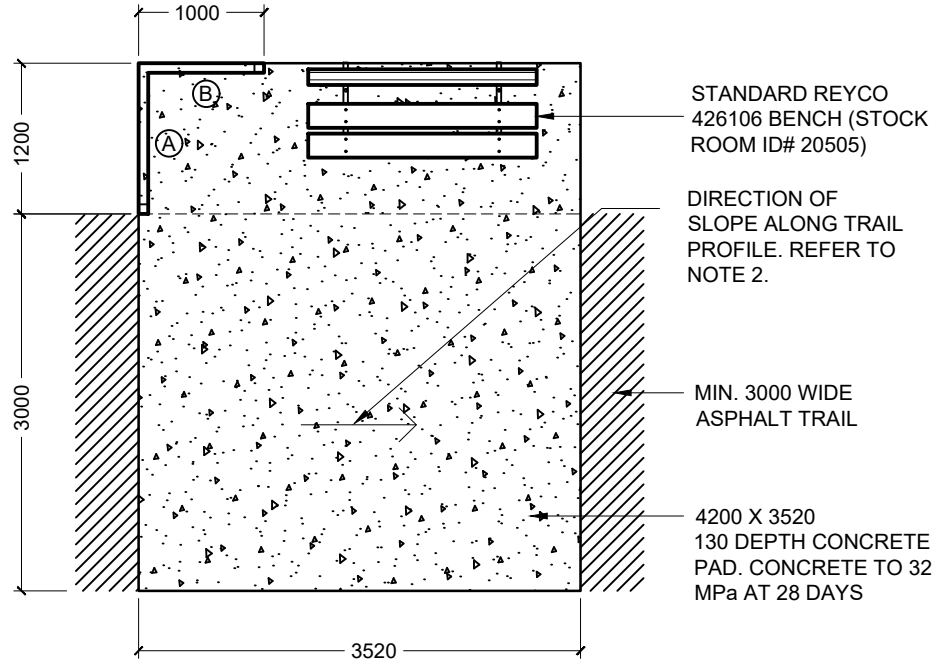
**CW-805**

**STOP CURB DETAILS:**

- (A) 1200 L X 75 W X 75 H CONCRETE CURB  
CONCRETE TO 32 MPa AT 28 DAYS
- (B) 1000 L X 75 W X 75 H CONCRETE CURB  
CONCRETE TO 32 MPa AT 28 DAYS

**NOTES:**

1. LOCATE BENCH MINIMUM 3000 FROM WASTE RECEPTACLE.
2. IF TRAIL PROFILE IS SLOPING IN THE OPPOSITE DIRECTION MIRROR THE PARK BENCH AND ACCESSIBLE RESTING AREA TO ENSURE NO PONDING OCCURS IN THE ACCESSIBLE RESTING AREA DUE TO THE CURBS.
3. WHEN A STANDALONE BENCH IS PROPOSED. THE CONCRETE PAD SHALL BE 2520 X 1200 COMPLETE WITH BROOM FINISH AND FINISHED EDGES.
4. CLEAN AND REINSTATE AREAS AFFECTED BY WORK.



ALL DIMENSIONS ARE IN MILLIMETERS UNLESS OTHERWISE SHOWN.

**STANDARD DRAWING**

REV 1

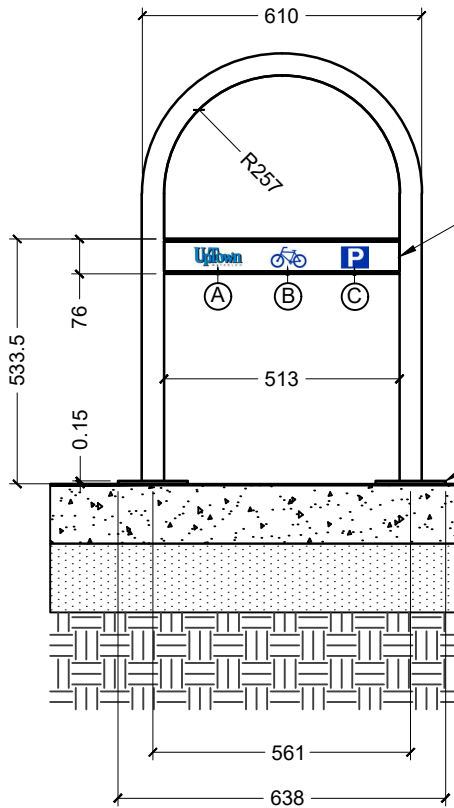
MAY 2023

**ACCESSIBLE RESTING AREA  
AND PARK BENCH DETAIL**

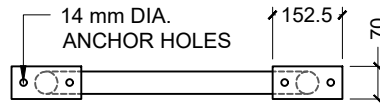
THE CITY OF  
**Waterloo**

**CW-811**

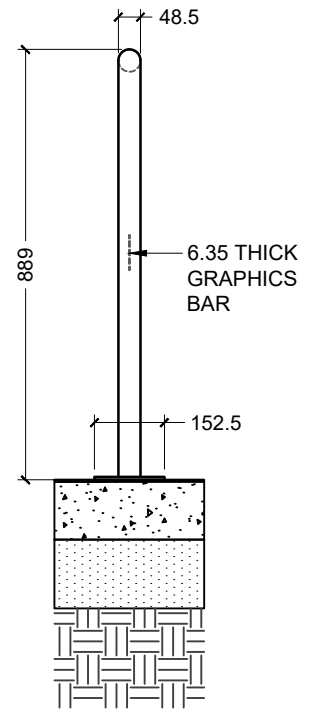
**FRONT VIEW**



**TOP VIEW**



**SIDE VIEW**



GRAPHICS BAR WITH CITY STANDARD VINYL GRAPHICS

(A) CITY OF WATERLOO LOGO OR UPTOWN WATERLOO LOGO

(B) BIKE SYMBOL

(C) PARKING SYMBOL

SURFACE MOUNT BASE PLATES TO CONCRETE USING ANCHOR BOLTS

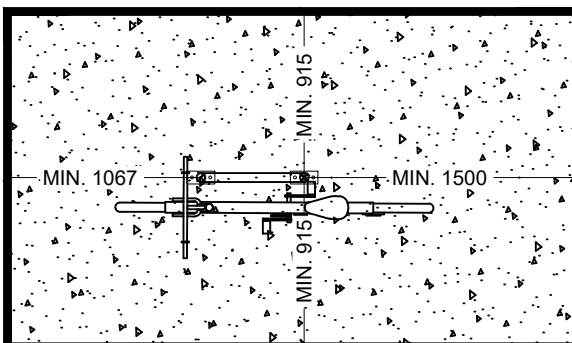
FINISHED GRADE

130 DEPTH CONCRETE PAD TO 30 MPa AT 28 DAYS

MIN. 150 DEPTH GRANULAR 'A' BASE COMPACT TO 95% S.P.D.D.

SUBGRADE COMPACT TO 95% S.P.D.D.

**MIN. CLEARANCES**



**NOTES:**

- COLOUR OF SINGLE ARCH BIKE RACK TO BE DETERMINED BY THE CITY OF WATERLOO:  
GLOSS BLUE (RGB 0,0,255) OR BLACK (RGB 0,0,0)
- CONCRETE PAD WITH TROWELED EDGE AND BROOM BRUSHED SURFACE.
- POLYESTER POWDER OVER ZINC RICH PRIMER. HOT DIP GALVANIZED.
- CONTACT CITY OF WATERLOO FOR GRAPHIC STICKERS.

ALL DIMENSIONS ARE IN MILLIMETERS UNLESS OTHERWISE SHOWN.

**STANDARD DRAWING**

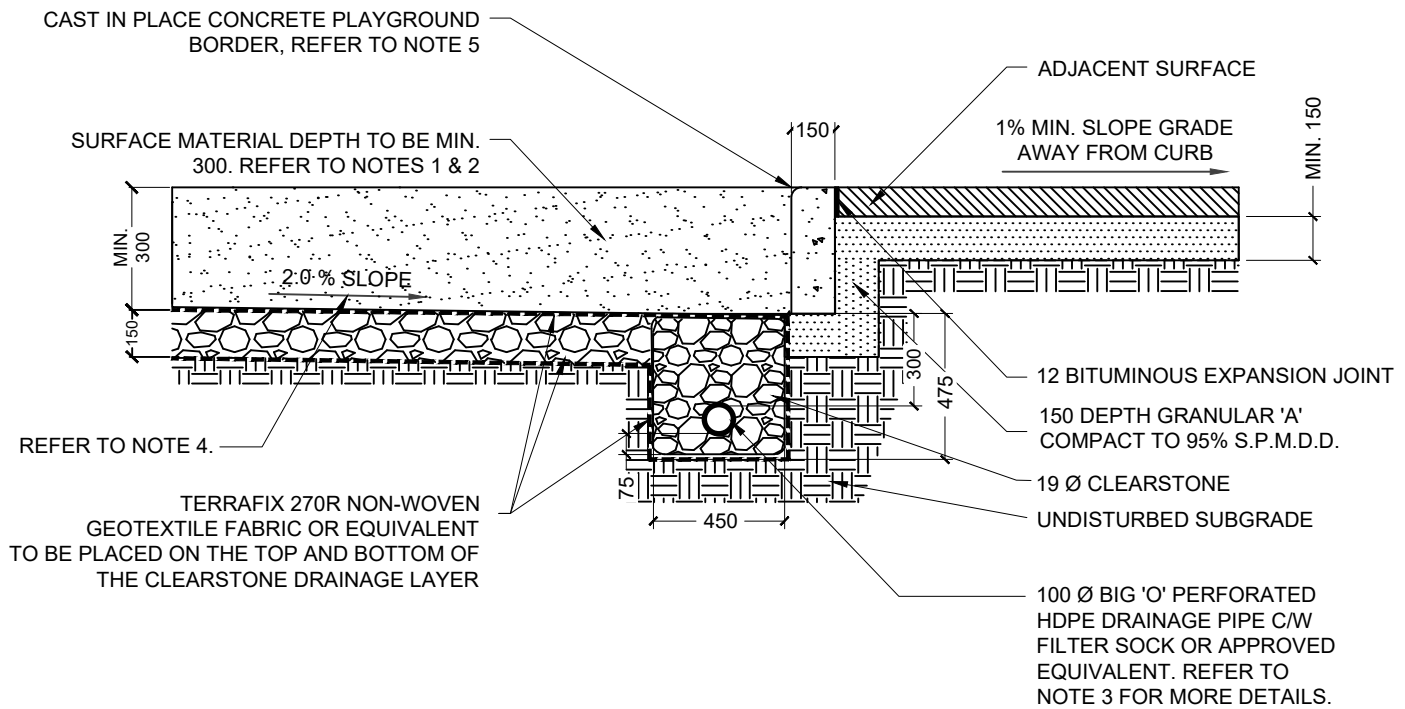
REV 1

MAY 2023

**SINGLE INVERTED 'U' BIKE RACK**

THE CITY OF **Waterloo**

**CW-812**



NOTES:

1. DEPTH OF COMPACTED SAFETY SURFACING MATERIAL BASED ON FALL HEIGHT OF PLAY EQUIPMENT PLUS 50 OR MIN. 300, WHICHEVER IS GREATER.
2. USE FIBAR SYSTEM ENGINEERED WOOD FIBRE, WOOD CARPET ENGINEERED WOOD FIBRE OR APPROVED EQUIVALENT THAT HAS THE ABILITY TO RESIST COMPACTION DURING USE, WITHOUT ROTO-TILLING, WHILE CONTINUING TO PASS THE C.S.A. Z614-20 STANDARD.
3. PERFORATED DRAINAGE PIPE TO BE INSTALLED AROUND THE ENTIRE PERIMETER OF THE PLAYGROUND AND CONNECTED TO A STORM STRUCTURE.
4. WHENEVER POSSIBLE, THE CONCRETE PLAYGROUND BORDER IS TO BE POURED LEVEL, AND THE PLAYGROUND SUBGRADE IS TO BE PROVIDED WITH A HIGH POINT IN THE CENTER AND DRAIN AT A MIN 2% TO THE PERIMETER DRAINAGE PIPE. FOR PARKS WITH STEEPER GRADES, THE PLAYGROUND BORDER ELEVATION AND SITE GRADING SHALL BE APPROVED BY THE CITY.
5. CAST IN PLACE CONCRETE PLAYGROUND BORDER
  - 150 WIDE X 400 HIGH MIN.
  - 32 MPa AT 28 DAYS
  - 25 RADIUS ON ALL EXPOSED EDGES
  - 5 RADIUS ON ALL OTHER EDGES
  - BROOM OR TROWEL FINISH
  - CONTROL JOINTS EVERY +/- 3000 O.C.
6. FOR ACCESSIBLE RAMP DETAILS REFER TO DETAIL CW-822.
7. PROVIDE EXPANSION JOINT AT ALL APPROVED ROCK BOULDER / CONCRETE INTERFACES
8. PROVIDE SAWN CONTROL JOINTS EVERY 1800 O.C.

ALL DIMENSIONS ARE IN MILLIMETERS UNLESS OTHERWISE SHOWN.

STANDARD DRAWING

REV 1      MAY 2023

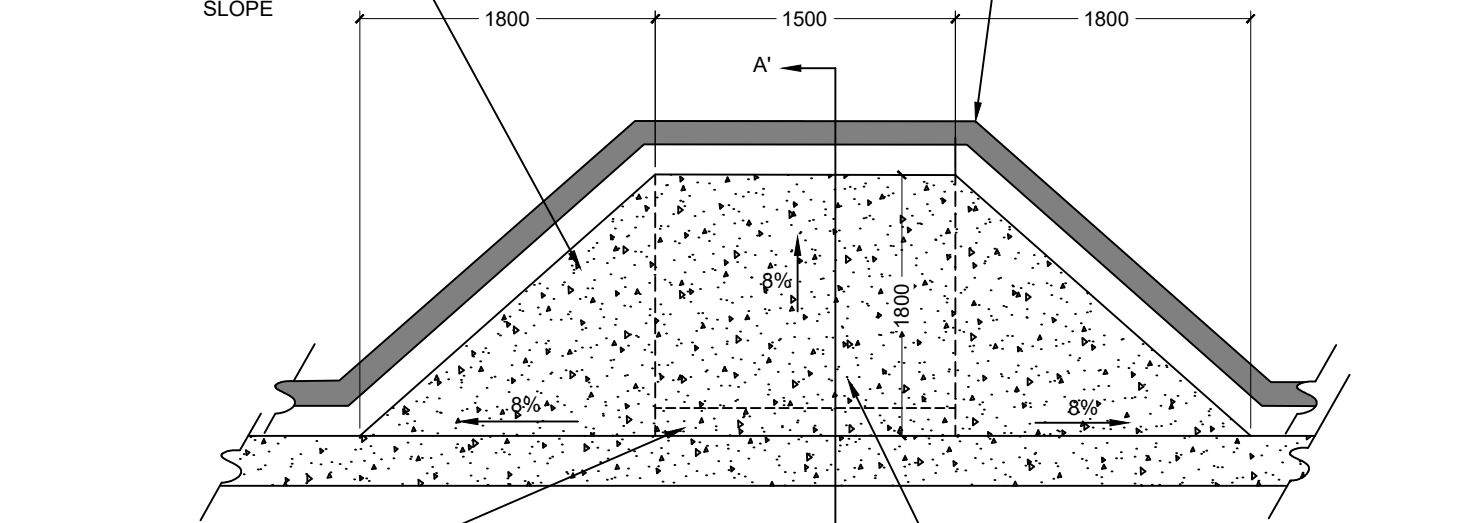
**PLAYGROUND SUB-DRAINAGE AND  
CONCRETE EDGE DETAIL**



**CW-821**

CAST-IN-PLACE  
CONCRETE  
SIDESLOPES. BROOM  
FINISH TO RUN  
PERPENDICULAR TO  
SLOPE

100 DIA. BIG 'O' PERFORATED  
HDPE DRAINAGE PIPE C/W  
FILTER OR APPROVED  
EQUIVALENT. REFER TO  
DWG CW-821 FOR FURTHER  
DETAILS.

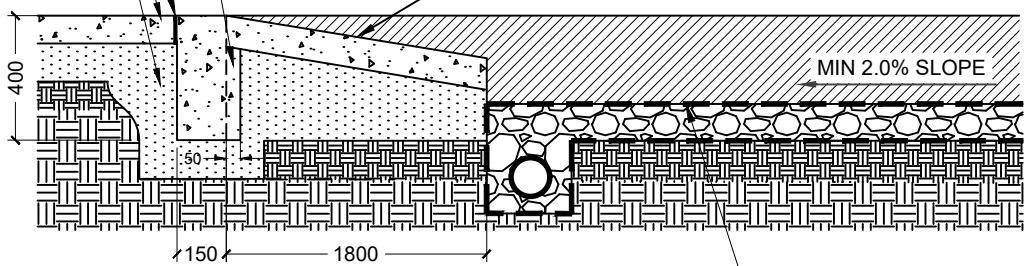


TO SUPPORT RAMP,  
CONCRETE BORDER TO  
BE PROVIDED WITH  
50mm BENCH IN  
LOCATION OF  
PROPOSED RAMP.

CAST-IN-PLACE CONCRETE  
PLAYGROUND RAMP C/W BROOM  
FINISH PERPENDICULAR TO SLOPE

EXPANSION JOINT  
ADJACENT SURFACE

COMPACTED  
GRANULAR 'A' BASE



SECTION A-A'

FOR PLAYSURFACE MATERIAL DEPTH,  
SUB-DRAINAGE AND BORDER DETAILS  
REFER TO PLAYGROUND  
SUB-DRAINAGE AND CONCRETE EDGE  
DETAIL CW-821

ALL DIMENSIONS ARE IN MILLIMETERS UNLESS OTHERWISE SHOWN.

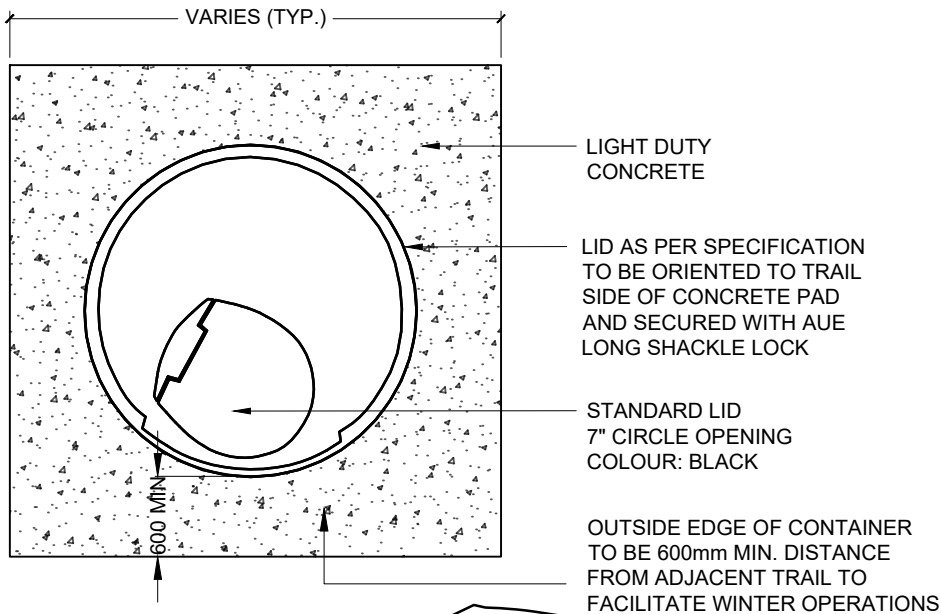
STANDARD DRAWING

REV 1      MAY 2023

# ACCESSIBLE PLAYGROUND RAMP DETAIL

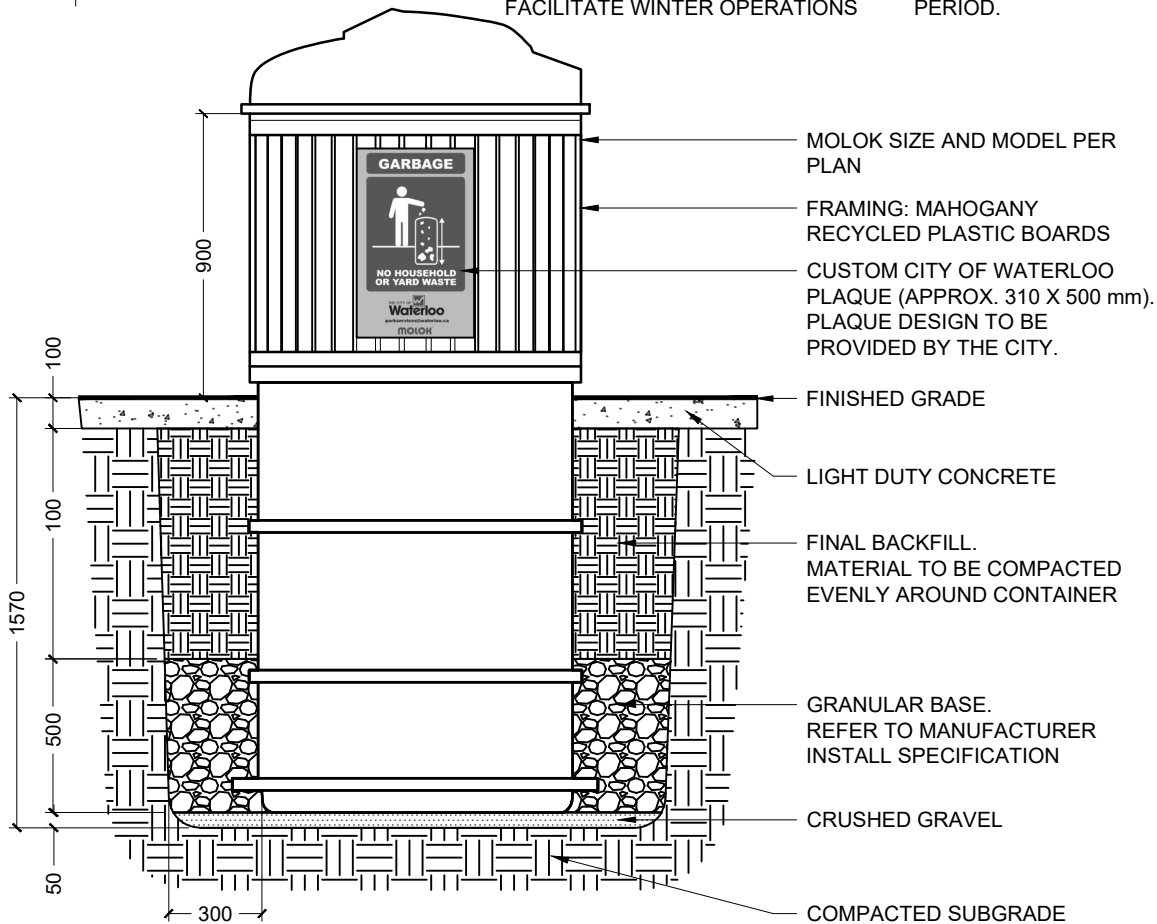


**CW-822**



NOTES:

1. INSTALLATION OF SEMI-UNDERGROUND WASTE CONTAINERS MUST FOLLOW THE MANUFACTURER'S INSTALLATION SPECIFICATIONS AND INCLUDE A DISPOSABLE LINER BAG.
2. SUBSURFACE DRAINAGE IS REQUIRED AT THE PROJECT MANAGER'S DISCRETION FOR AREAS WHERE TERRAIN CONTAINS CLAY OR SILT. IF REQUIRED, SUBSURFACE DRAINAGE IS TO BE INSTALLED AS PER THE MANUFACTURER'S RECOMMENDATION.
3. THE DEVELOPER IS RESPONSIBLE FOR EMPTYING AND REPLACING THE DISPOSABLE LINER BAG WITHIN THE LFITING LINER DURING THE MAINTENANCE PERIOD.



ALL DIMENSIONS ARE IN MILLIMETERS UNLESS OTHERWISE SHOWN.

STANDARD DRAWING

REV 1

MAY 2023

STANDARD GARBAGE RECEPTACLE

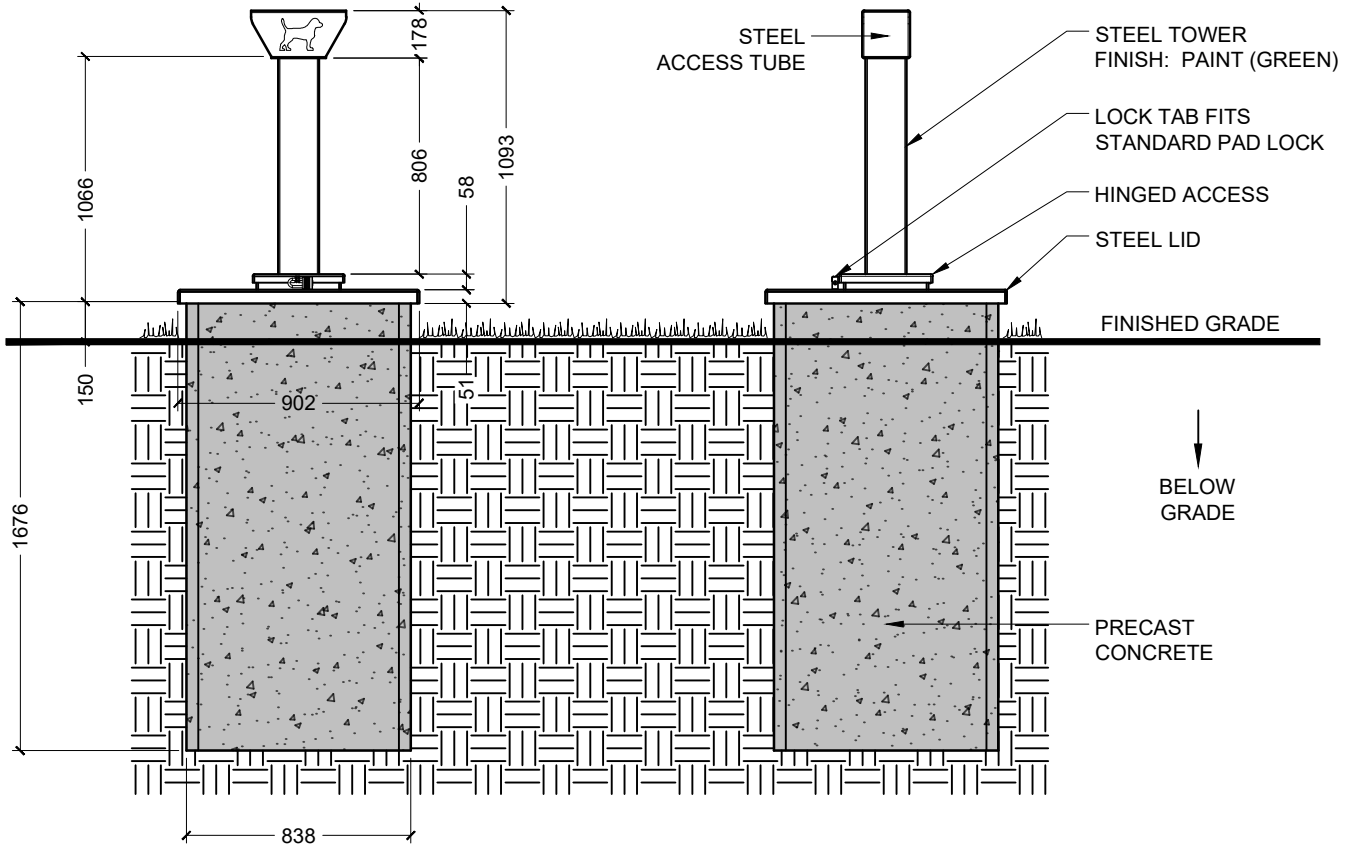
THE CITY OF  
**Waterloo**

**CW-831**

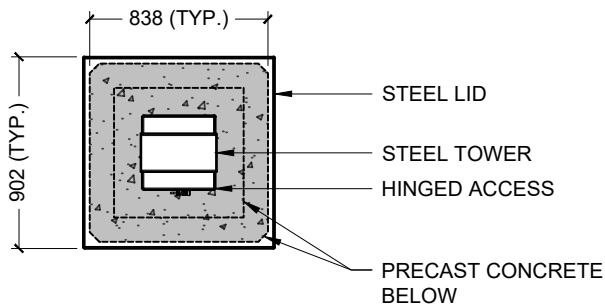


### FRONT VIEW

### SIDE VIEW



### TOP VIEW



### NOTES:

1. DOG WASTE: 542 LITERS
2. EXCAVATION: MIN 1.5 m x 2.5 m (5' x 8').
3. PRODUCT TO BE INSTALLED AS PER MANUFACTURER'S INSTRUCTIONS.
4. KEEP CLEAN BY SPRAYING DOWN WITH CLEAN WATER. GREASE ACCESS LID HINGES ANNUALLY.
5. CONTENTS TO BE REMOVED WITH BAG SYSTEM.

ALL DIMENSIONS ARE IN MILLIMETERS UNLESS OTHERWISE SHOWN.

**STANDARD DRAWING**

REV 1

MAY 2023

**DOG WASTE CONTAINMENT SYSTEM**

THE CITY OF  
**Waterloo**

**CW-832**