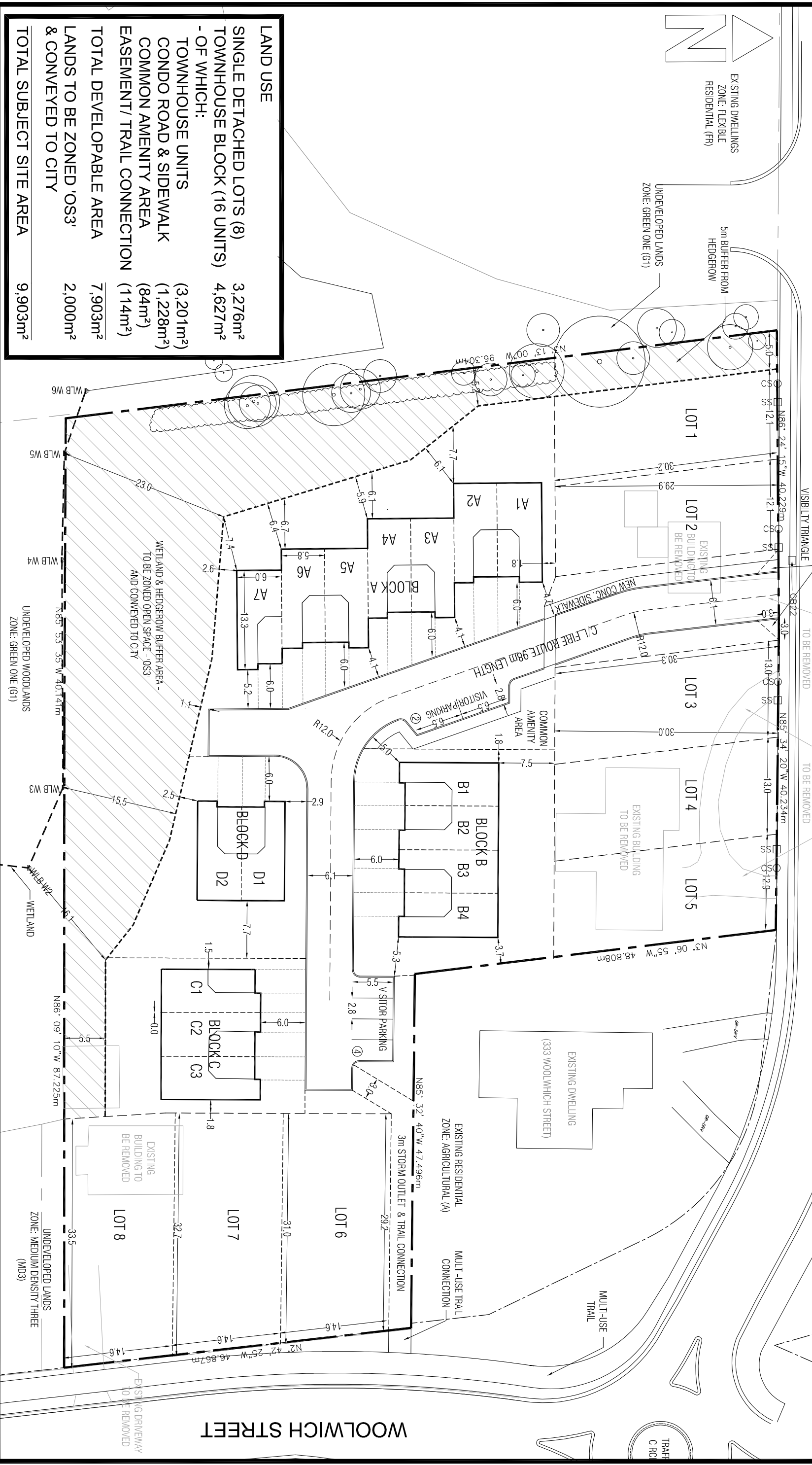


WOOLWICH STREET



LAND USE	Area
SINGLE DETACHED LOTS (8)	3,276m ²
TOWNHOUSE BLOCK (16 UNITS)	4,627m ²
- OF WHICH:	
TOWNHOUSE UNITS	(3,201m ²)
CONDO ROAD & SIDEWALK	(1,228m ²)
COMMON AMENITY AREA	(84m ²)
EASEMENT/ TRAIL CONNECTION	(114m ²)
TOTAL DEVELOPABLE AREA	7,903m ²
LANDS TO BE ZONED 'OS3' & CONVEYED TO CITY	2,000m ²
TOTAL SUBJECT SITE AREA	9,903m ²

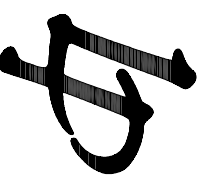
CONCEPT PLAN FOR RESUBMISSION (JUNE 20, 2019)

319, 337 & 343 WOOLWICH STREET

CITY OF WATERLOO

SCALE 1:500 (PAPER SIZE: 11x17)

PROJECT No. P-974



Labreche Patterson & Associates Inc.
Professional Planners, Development Consultants, Project Managers
 330-F Trillium Drive
 Kitchener, Ontario
 N2E 3J2
 P - (519) 896-5955
 F - (519) 896-5355