

PLAN MATERIAL  
 - MYLAR  
 - 0.003 INCH GAUGE  
 - ORIGINAL PROCESS  
 - INK

SCHEDULE OF PARTS		COMPOSITION	
PART	OWNER	AREA AC.	AC.
1	EDWARD MUEGGE INST. NO. 472748	1.916	AC.
2	ELDON AND GLADYS INST. NO. 40321	2.812	AC.
3	JOHN CLIFFORD AND ROMA ARLENE CARLSON INST. NO. 230386	148.50	FT.
4		0.258	AC.
5		2.973	AC.

PLAN 58 R-4-13  
 RECEIVED AND DEPOSITED  
 ON 26. Sept. 1983  
 R. W. Metz  
 LAND REGISTRAR FOR  
 THE REGISTRY DIVISION OF  
 WATERLOO NORTH (NO. 381)

I REQUIRE THIS PLAN TO  
 BE DEPOSITED UNDER THE  
 REGISTRY ACT.  
 JANUARY 27, 1983.  
 R. W. Metz  
 R. W. LISHMAN C.S.T.

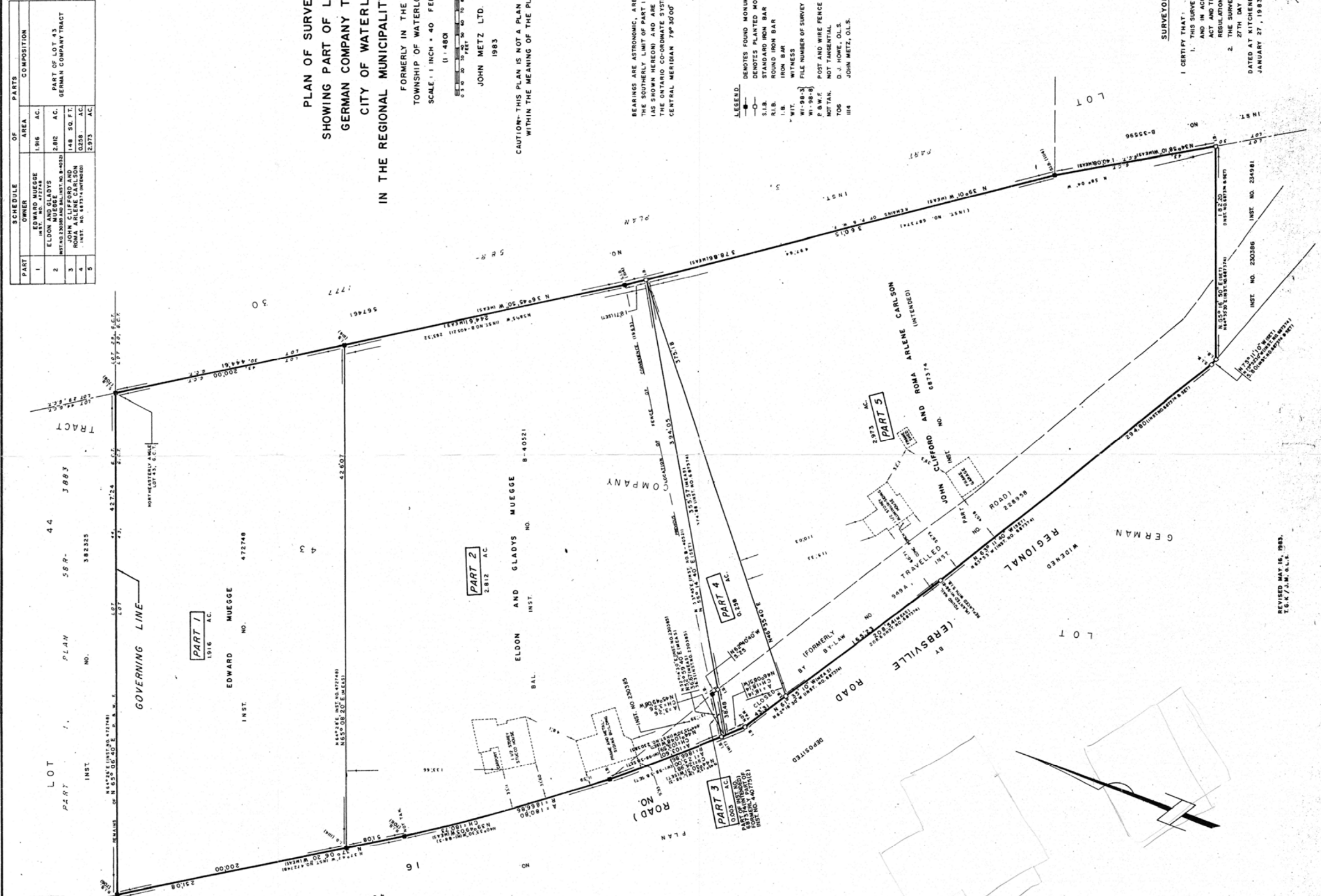
PLAN OF SURVEY  
 SHOWING PART OF LOT 43  
 GERMAN COMPANY TRACT  
 CITY OF WATERLOO  
 IN THE REGIONAL MUNICIPALITY OF WATERLOO

FORMERLY IN THE  
 TOWNSHIP OF WATERLOO  
 SCALE: 1 INCH = 40 FEET  
 (1:4800)  
 JOHN METZ LTD.  
 1983

CAUTION- THIS PLAN IS NOT A PLAN OF SUBDIVISION  
 WITHIN THE MEANING OF THE PLANNING ACT.

BEARINGS ARE ASTROMONIC, ARE DERIVED FROM  
 THE SOUTHERLY LIMIT OF PART 1, PLAN 58R-3883  
 (AS SHOWN HEREON) AND ARE REFERRED TO  
 THE ONTARIO CO-ORDINATE SYSTEM ZONE 10,  
 CENTRAL MERIDIAN 79°30'00" WEST.

- LEGEND:
- DENOTES FOUND MONUMENT
  - DENOTES PLANTED MONUMENT
  - S.I.B. STANDARD IRON BAR
  - I.B. IRON BAR
  - WITNESS
  - WI-99-3 FILE NUMBER OF SURVEY RECORDS OF THIS OFFICE
  - WI-98-8
  - P.B.W.F. POST AND WIRE FENCE
  - NOTTAL. NOT TANGENTIAL
  - 706 D. J. HOME, O.L.S.
  - 114 JOHN METZ, O.L.S.



SURVEYOR'S CERTIFICATE  
 I CERTIFY THAT:  
 1. THIS SURVEY AND PLAN ARE CORRECT  
 AND IN ACCORDANCE WITH THE SURVEYS  
 ACT AND THE REGISTRY ACT AND THE  
 REGULATIONS MADE THEREUNDER.  
 2. THE SURVEY WAS COMPLETED ON  
 27TH DAY OF JANUARY, 1983.  
 DATED AT KITCHENER  
 JANUARY 27, 1983.



JOHN METZ LTD.  
 ONTARIO LAND SURVEYING  
 71 WEBER ST. E., WATERLOO  
 ONTARIO, CANADA  
 JANUARY 27, 1983  
 FILE NUMBER: W. 58-2-13

REVISED MAY 16, 1983.  
 T.C.K./J.M.G.L.L.