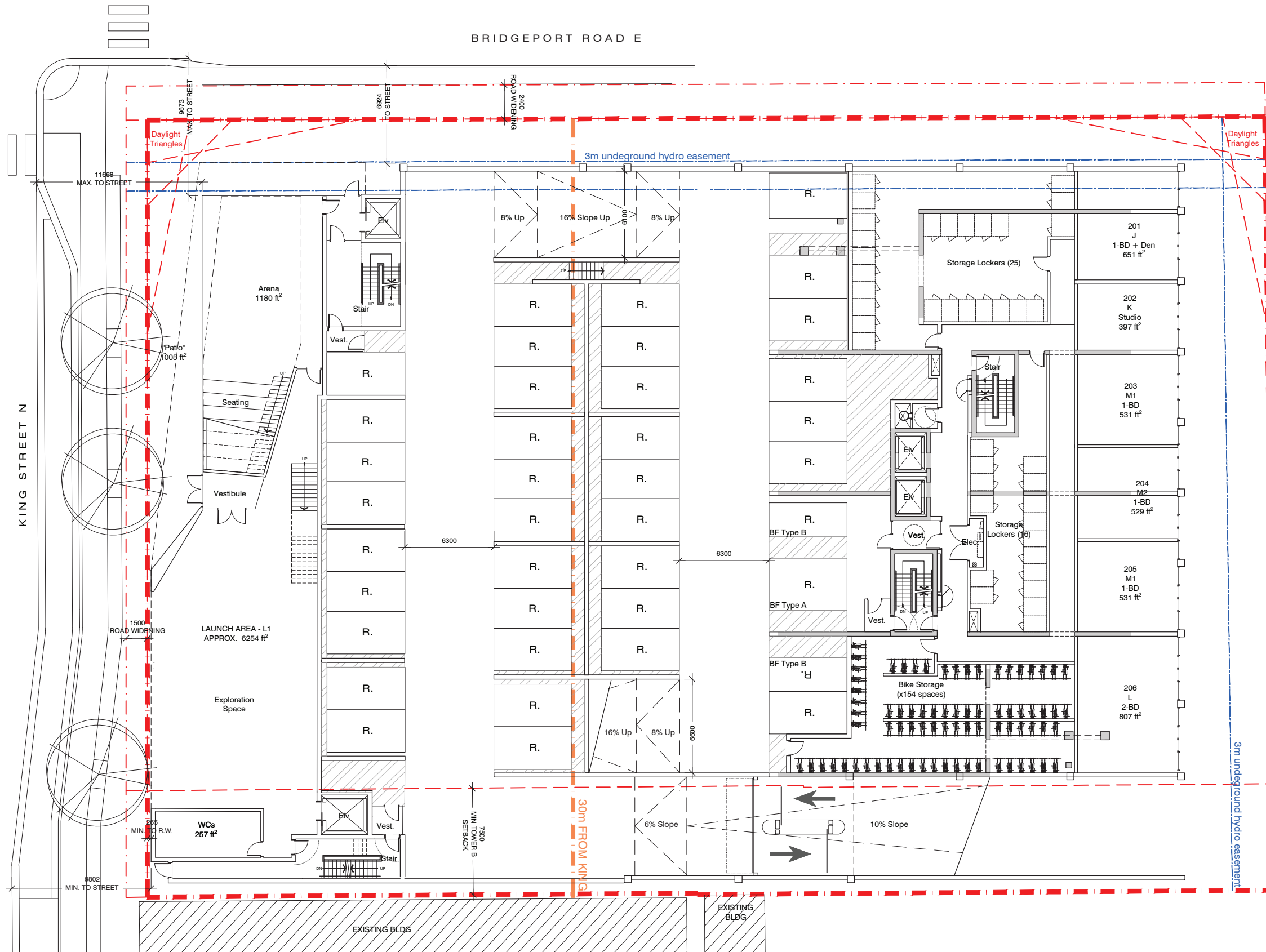


**Parking Counts:**

	Total
current sheet → L1/P1:	44
L2/P2:	39
L3/P3:	44
L4/P4:	44
<b>Total:</b>	<b>171</b>

Ground Floor Plan (L1/P1)

Scale 1:300



### Parking Counts:

	Total
current sheet → L1/P1:	44
L2/P2:	39
L3/P3:	44
L4/P4:	44
<b>Total:</b>	<b>171</b>

### x6 Podium Units (L2-L4 Only):

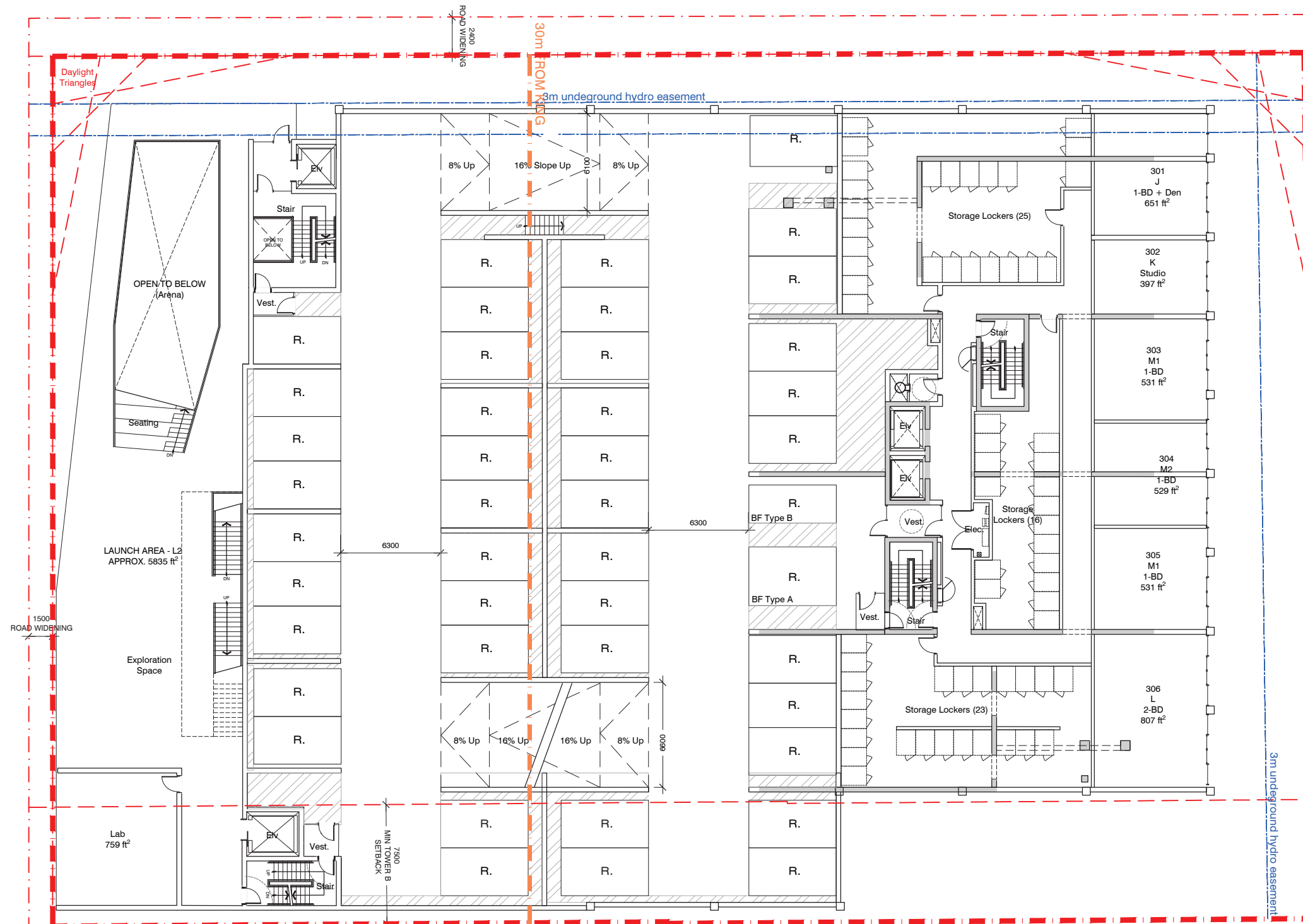
- 1 x Unit J (1 -bed) = 651 ft<sup>2</sup>
- 1 x Unit K (1-bed) = 397 ft<sup>2</sup>
- 3 x Unit M (1-bed) = 490 ft<sup>2</sup>
- 1 x Unit L (2 -bed) = 807 ft<sup>2</sup>

Parking Level (L2/P2)

Scale 1:300

# HIP Developments

70 King St, Waterloo, ON  
October 25, 2021



## Parking Counts:

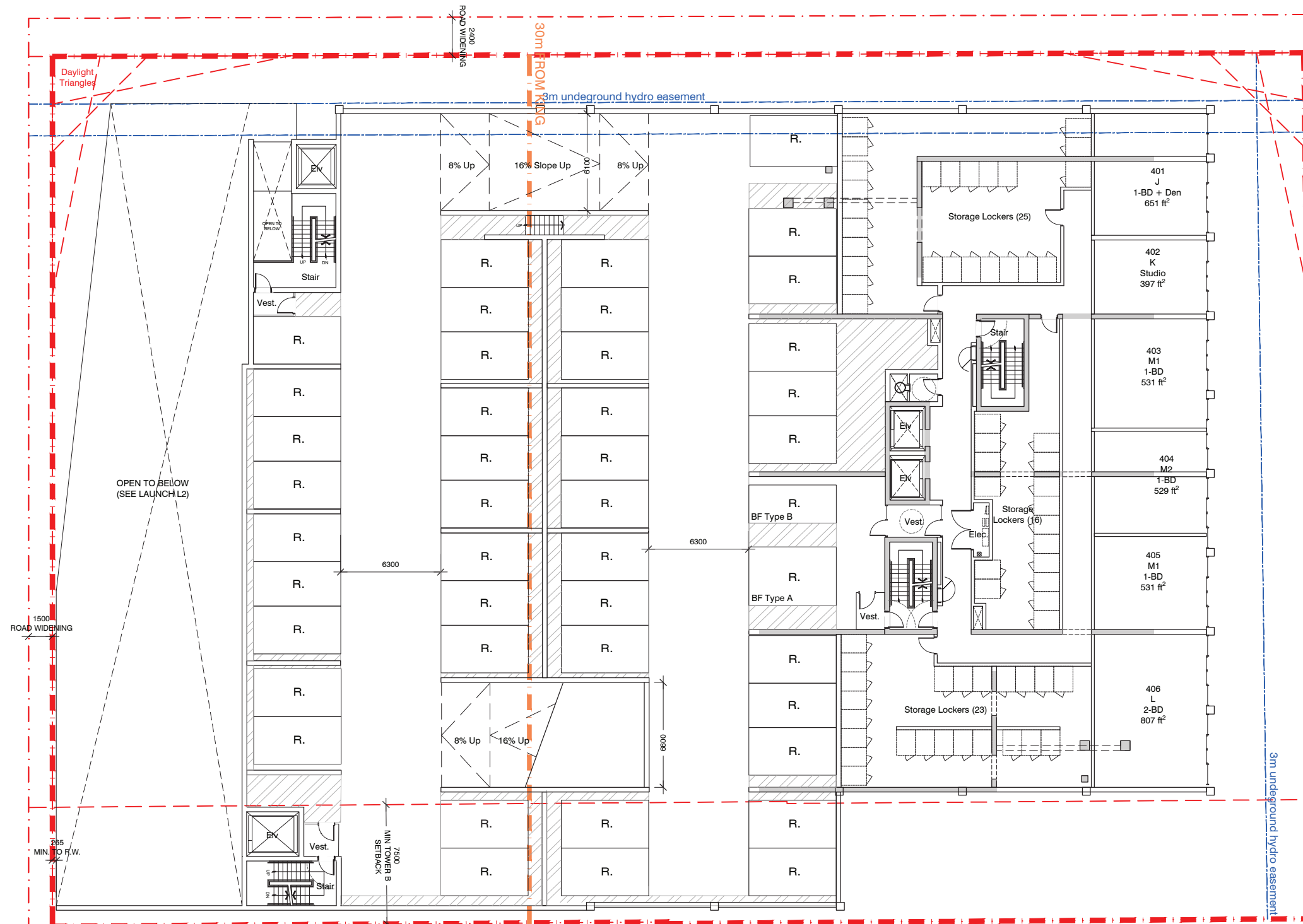
	Total
L1/P1:	44
L2/P2:	39
L3/P3:	44
L4/P4:	44
<b>Total:</b>	<b>171</b>

## x6 Podium Units (L2-L4 Only):

- 1 x Unit J (1 -bed) = 651 ft<sup>2</sup>
- 1 x Unit K (1-bed) = 397 ft<sup>2</sup>
- 3 x Unit M (1-bed) = 490 ft<sup>2</sup>
- 1 x Unit L (2 -bed) = 807 ft<sup>2</sup>

Parking Level (L3/P3)

Scale 1:300



**Parking Counts:**

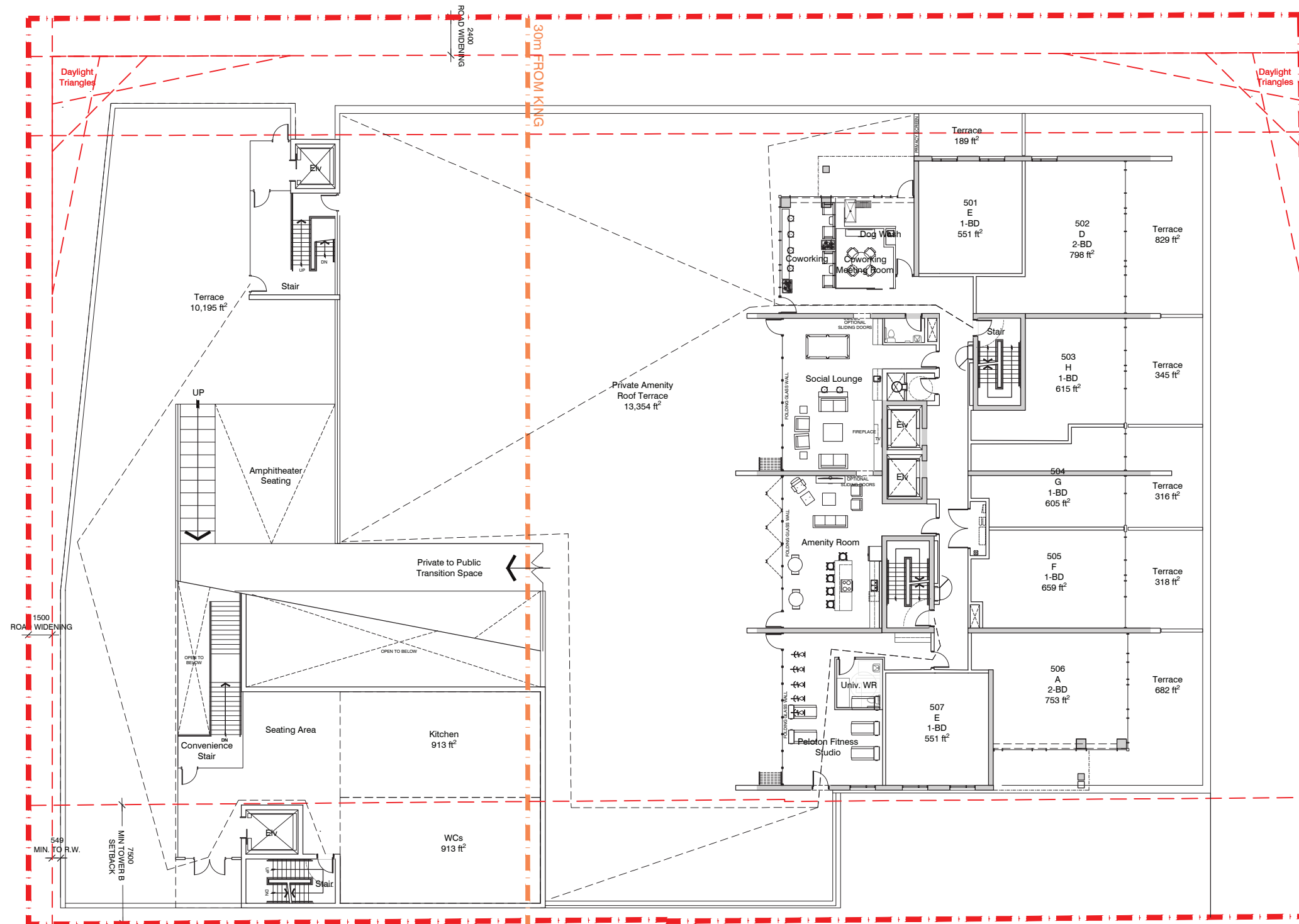
	Total
L1/P1:	44
L2/P2:	39
L3/P3:	44
L4/P4:	44
<b>Total:</b>	<b>171</b>

x6 Podium Units (L2-L4 Only):

- 1 x Unit J (1 -bed) = 651 ft<sup>2</sup>
- 1 x Unit K (1-bed) = 397 ft<sup>2</sup>
- 3 x Unit M (1-bed) = 490 ft<sup>2</sup>
- 1 x Unit L (2 -bed) = 807 ft<sup>2</sup>

Parking Level (L4/P4)

Scale 1:300



x7 Tower Units (L5 Only):

- 1 x Unit A (2-bed) = 753 ft<sup>2</sup>
- 1 x Unit D (2-bed) = 798 ft<sup>2</sup>
- 2 x Unit E (1-bed) = 551 ft<sup>2</sup>
- 1 x Unit F (1-bed) = 659 ft<sup>2</sup>
- 1 x Unit G (1-bed) = 605 ft<sup>2</sup>
- 1 x Unit H (1-bed) = 615 ft<sup>2</sup>

L5 Amenity Floor Plan

Scale 1:300