

TOWER UNITS:

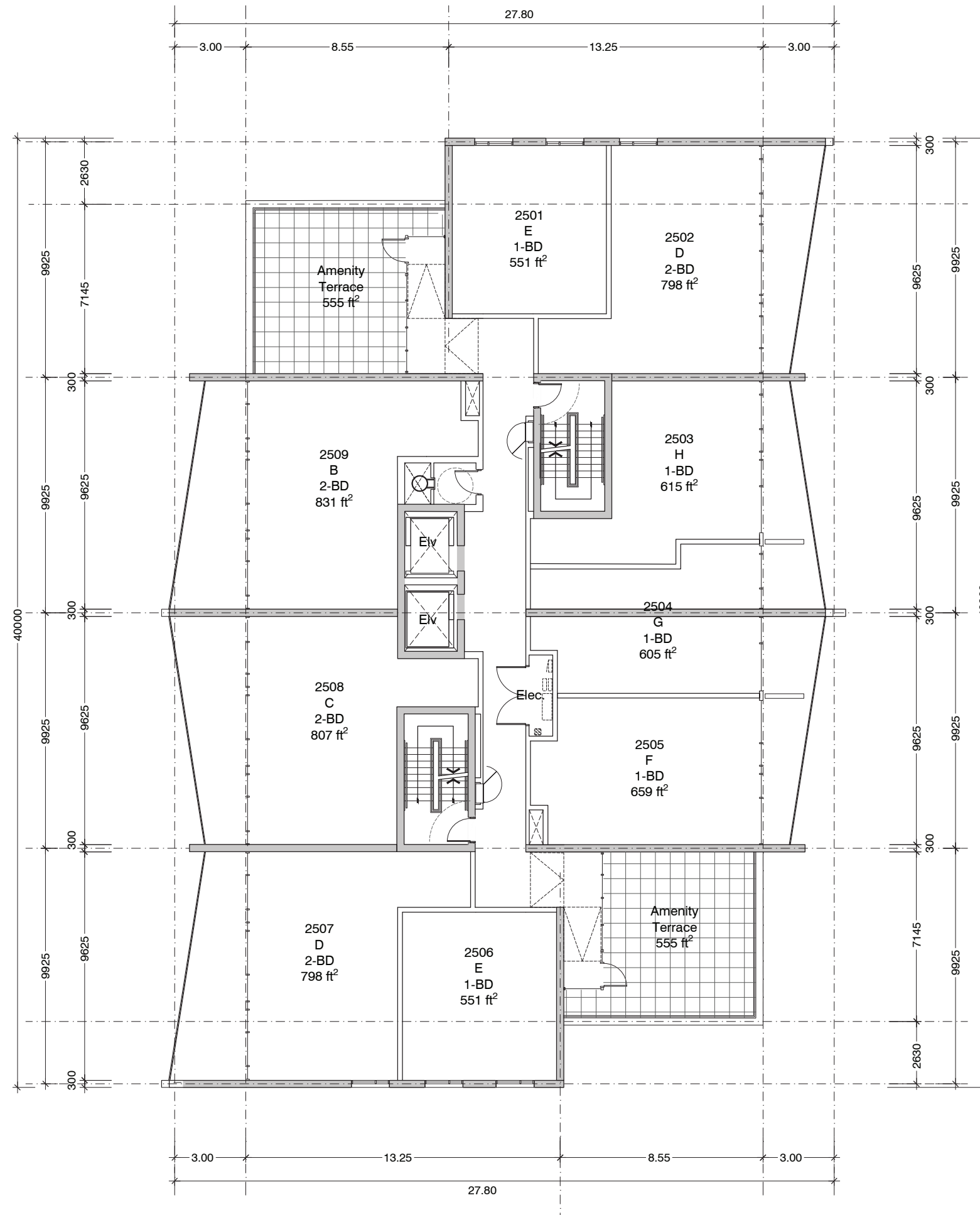
- L5: 7 Units
- L6-L24: (19 Floors x 11 Units/per Floor) = 209 Units
- L25: 9 Units
- Total: 225 Units**

120x Two Bedroom Units
105x One Bedroom Units
345x Beds Total

- 2 x Unit A (2-bed) = 753 ft²
- 1 x Unit B (2-bed) = 831 ft²
- 1 x Unit C (2-bed) = 807 ft²
- 2 x Unit D (2-bed) = 798 ft²
- 2 x Unit E (1-bed) = 551 ft²
- 1 x Unit F (1-bed) = 659 ft²
- 1 x Unit G (1-bed) = 605 ft²
- 1 x Unit H (1-bed) = 615 ft²

Typ. Residential Tower Plan
(L6 - L24)

Scale 1:200



L25 (Top Floor) Only:

- 1 x Unit B (2-bed) = 831 ft²
- 1 x Unit C (2-bed) = 807 ft²
- 2 x Unit D (2-bed) = 798 ft²
- 2 x Unit E (1-bed) = 551 ft²
- 1 x Unit F (1-bed) = 659 ft²
- 1 x Unit G (1-bed) = 605 ft²
- 1 x Unit H (1-bed) = 615 ft²

Top Floor Tower Plan (L25)

Scale 1:200