

BUILDING LINE LEGEND:

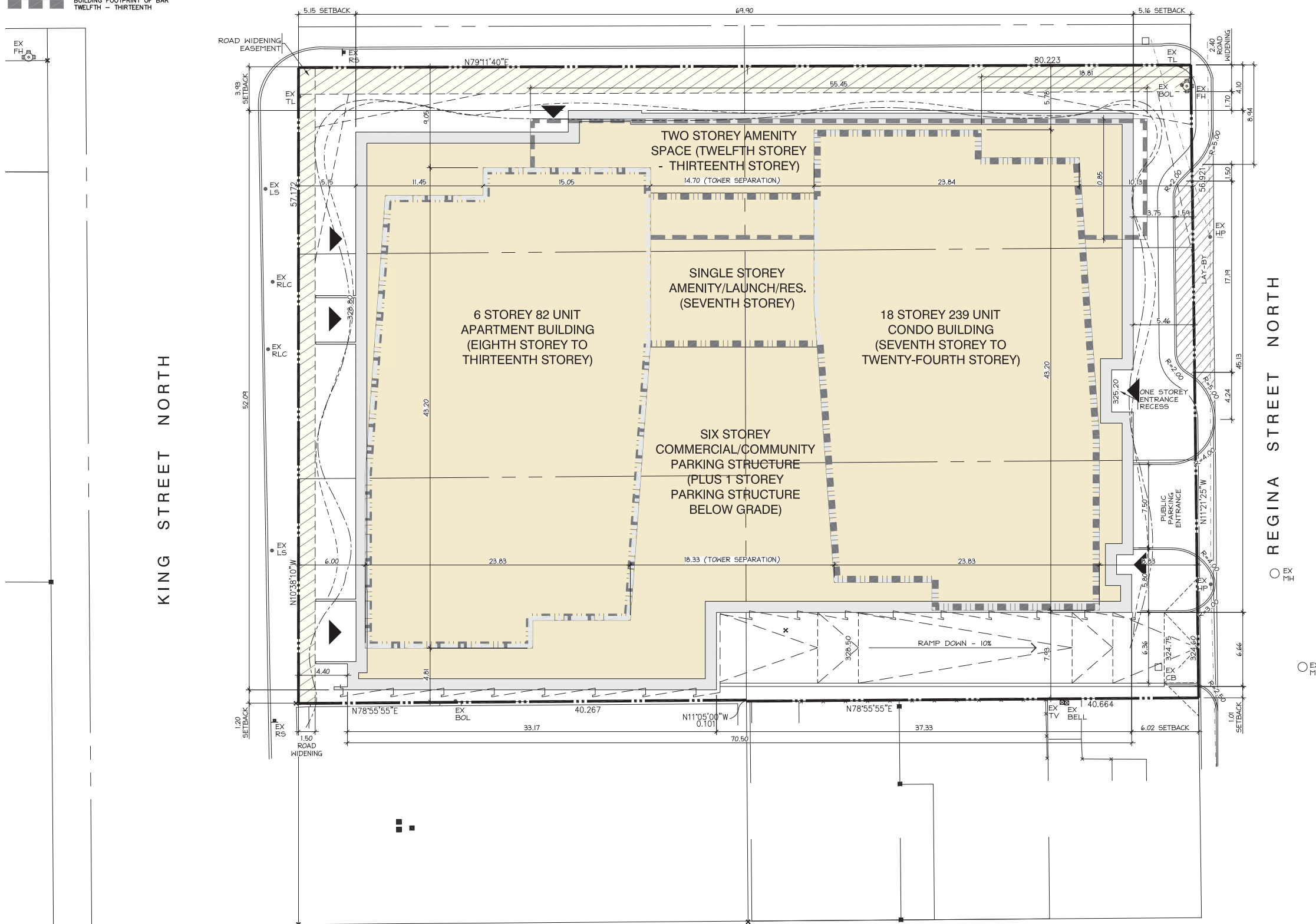
- BUILDING FOOTPRINT AT FIRST FLOOR (GRADE LEVEL) - SECOND FLOOR SIMILAR
- GLASS RIBBON AT 3RD FLOOR
- GLASS RIBBON AT 7TH FLOOR
- BUILDING FOOTPRINT AT SEVENTH FLOOR (AMENITY/LAUNCH/RES. LEVEL)
- 6 STOREY/15 STOREY APARTMENT BUILDING TYPICAL FLOOR FOOTPRINT
- BUILDING FOOTPRINT OF BAR TWELFTH - THIRTEENTH

SITE PLAN

UPTOWN POST LANDS

70 King St. N, Waterloo ON
April 16, 2018
1:400

BRIDGEPORT ROAD EAST



Podium Data

Level	Gross	LAUNCH	Retail	Amty. Rest.	Total
P1	31,870	-	-	-	47
L1	39,340	3,500	3,500	1,580	29 (22/9)
L2	39,340	-	-	-	53
L3	41,590	9,500	-	-	53
L4	40,850	9,500	-	-	53
L5	40,850	9,500	-	-	53
L6	12,100	-	-	-	20
L7	22,970	7,750	-	5,125	-

Total 268,910 39,750 3,500 6,705 308

	Prkg. Req.	Prkg. Prov.
Residential (1.25/unit)	401	252 (.8/unit)
Non-Res.		
LAUNCH (3.5/100m ²)	129	56 (1.5/100m ²)
Rest./Retail (3.5/100m ²)	12	-
Total	542	308

Tower Data

Tower A				Tower B								
Level	Gross	Res. Units	St	1B	2B	Level	Gross	Res. Units	Amty	St	1B	2B
L7						L7		6,250		1	6	2
L8	9,980	8,420	2	10	2	L8	9,900	8,420	-	2	10	2
L9	9,980	8,420	2	10	2	L9	9,900	8,420	-	2	10	2
L10	9,980	8,420	2	10	2	L10	9,900	8,420	-	2	10	2
L11	9,980	8,420	2	10	2	L11	9,900	8,420	-	2	10	2
L12	9,245	7,640	1	11	1	L12	13,400	6,340	5,700	1	7	2
L13	9,245	7,640	1	11	1	L13	7,700	6,340	-	1	7	2
Pent	7,140	-	-	-	-	L14	9,900	8,420	-	2	10	2
						L15	9,900	8,420	-	2	10	2
Total	65,550		10	62	10	L16	9,900	8,420	-	2	10	2
Total Units				82		L17	9,900	8,420	-	2	10	2
Total Beds				92		L18	9,900	8,420	-	2	10	2
						L19	9,900	8,420	-	2	10	2
						L20	9,900	8,420	-	2	10	2
						L21	9,900	8,420	-	2	10	2
						L22	9,900	8,420	-	2	10	2
						L23	9,900	8,420	-	2	10	2
						L24	9,900	8,420	-	2	10	2
						Pent	7,050	-	-	-	-	-

*150 Storage Lockers Provided **Total** 176,750 **33** 170 36

Total Units 239
Total Beds 275

total Gross 242,200 Total Units 321 Total Beds 367 Beds/Hect. 805
(max. Beds/Hect.750)