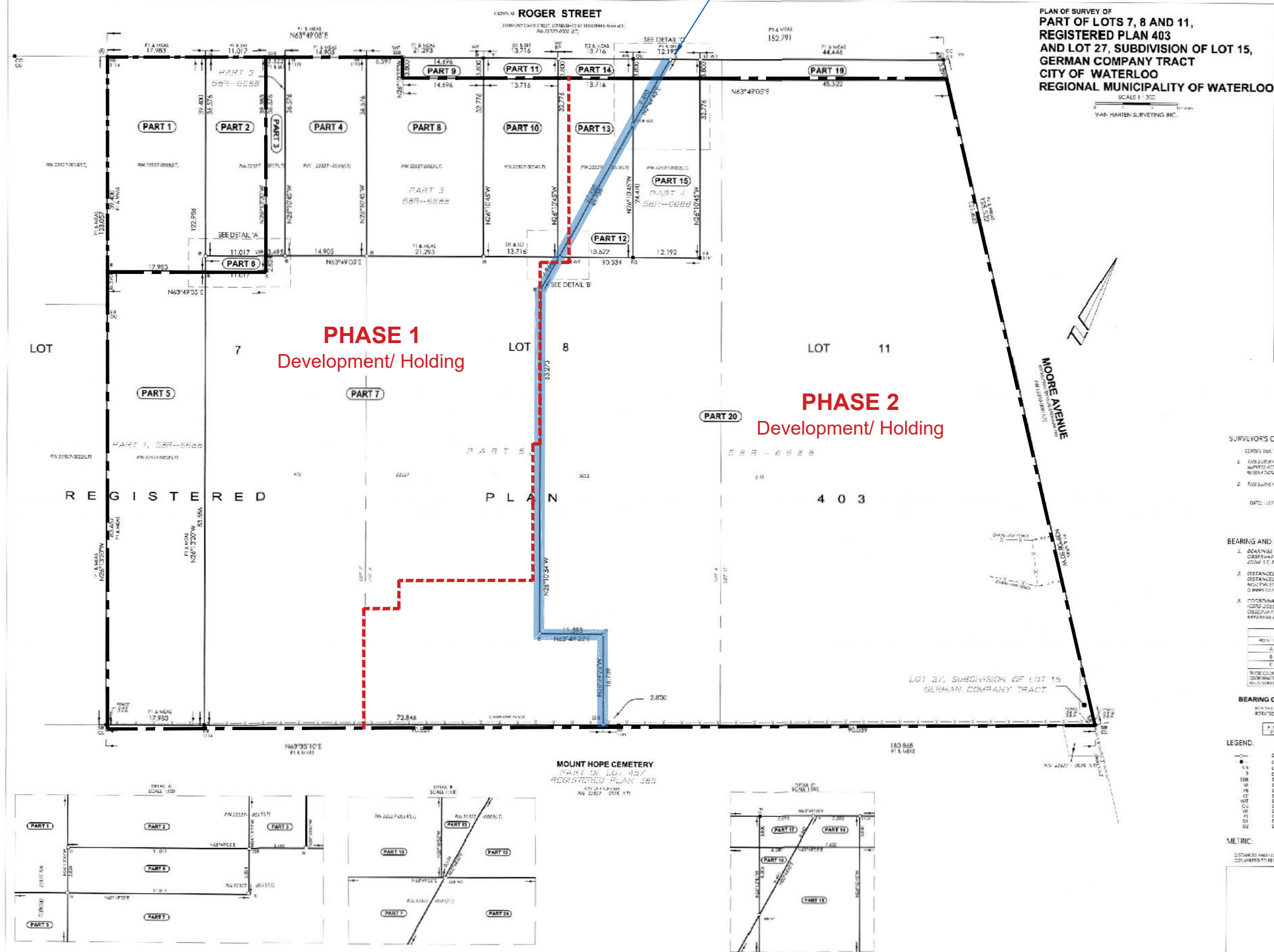


Division Line Between Phase 1
RSC & Phase 2 RSC



PLAN OF SURVEY OF
PART OF LOTS 7, 8 AND 11,
REGISTERED PLAN 403
AND LOT 27, SUBDIVISION OF LOT 15,
GERMAN COMPANY TRACT
CITY OF WATERLOO
REGIONAL MUNICIPALITY OF WATERLOO

SCALE 1:300

VAN HARTEN SURVEYING INC.

PLAN 58R-20537
RECEIVED AND DEPOSITED

DATE: July 2009

DATE: July 10/09

James Laws

REGISTRATION OFFICER

REGISTRATION OFFICER

PART	LOT	PLAN	P.S.	AREA P. %
1	PART OF 7	403	PART OF 22327-0018	207.92
2	PART OF 7	403	PART OF 22327-0217	402.87
3	PART OF 7	403	PART OF 22327-0217	436.29
4	PART OF 7	403	PART OF 22327-0217	344.70
5	PART OF 7	403	PART OF 22327-0217	383.00
6	PART OF 7	403	PART OF 22327-0217	155.45
7	PART OF 7 & 8	722	PART OF 22327-0013	5451.55
8	PART OF 8	403	PART OF 22327-0013	722.86
9	PART OF 8	403	PART OF 22327-0013	55.80
10	PART OF 8	403	PART OF 22327-0013	447.15
11	PART OF 8	403	PART OF 22327-0013	52.07
12	PART OF 8	403	PART OF 22327-0013	166.40
13	PART OF 8	403	PART OF 22327-0013	283.87
14	PART OF 8	403	PART OF 22327-0013	63.08
15	PART OF 8	403	PART OF 22327-0013	286.12
16	PART OF 8	403	PART OF 22327-0013	191.04
17	PART OF 8	403	PART OF 22327-0013	23.42
18	PART OF 8	403	PART OF 22327-0013	26.88
19	PART OF 8 & 11	403	PART OF 22327-0013	178.43
20	PART OF 8 & 11	403	PART OF 22327-0013	829.85

PARTS 1 & 2 COMPRISE ALL OF PIN 22327-0018; PARTS 3 & 4 COMPRISE ALL OF PIN 22327-0217; PARTS 5 & 6 COMPRISE ALL OF PIN 22327-0217; PARTS 7 & 8 COMPRISE ALL OF PIN 22327-0013; PARTS 9 & 10 & 11 COMPRISE ALL OF PIN 22327-0013; PARTS 12, 13 & 14 COMPRISE ALL OF PIN 22327-0013; PARTS 15, 16, 17 & 18 COMPRISE ALL OF PIN 22327-0013; PARTS 19 & 20 COMPRISE ALL OF PIN 22327-0013.

SURVEYOR'S CERTIFICATE

I, JAMES LAWS, SURVEYOR, DO HEREBY CERTIFY THAT:

- THIS SURVEY WAS COMPLETED IN ACCORDANCE WITH THE SURVEY ACT, THE REGULATION AND THE LAND SURVEY ACT AND THE REGULATION MADE THEREUNDER.
- THIS SURVEY WAS COMPLETED ON THE 20th DAY OF JULY, 2009.

DATE: JULY 2009

JAMES LAWS
REGISTERED SURVEYOR

BEARING AND COORDINATE NOTE:

- BEARINGS ARE UNO BEARINGS AND ARE DERIVED FROM UTM COORDINATES AND ARE REFERRED TO THE UTM PROJECTION, ZONE 17, NAD 83 (1983-10) ADJUSTMENT.
- DISTANCES SHOWN ON THIS PLAN ARE ADJUSTED ORIGINAL DISTANCES AND CAN BE CONVERTED TO GRID DISTANCES BY MULTIPLYING BY AN APPROVED CORRECTION SCALE FACTOR OF 0.99987776.
- COORDINATES ON THIS PLAN ARE UTM ZONE 17, NAD 83 (1983-10) ADJUSTED POINTS AND ARE BASED ON GPS OBSERVATIONS FROM A NETWORK OF PERMANENT GPS REFERENCE STATIONS.

UTM COORDINATES (METRES)		
POINT NO.	EASTING	NORTHING
A	475 361 736	538 577 128
B	475 235 839	538 744 483
C	475 264 176	538 784 084

THESE COORDINATES WILL BE APPLIED TO ALL DISTANCES AND BEARINGS UNLESS SPECIFIED OTHERWISE IN THIS PLAN.

BEARING COMPARISONS:

NOTES: BEARINGS OF THIS SURVEY COMPARED TO PREVIOUS SURVEYS HAVE BEEN RELATED TO THE BEARINGS OF THE PREVIOUS SURVEYS.

PREVIOUS SURVEY	DATE	BEARING	REMARKS

LEGEND:

— SURVEY MUNICIPALITY LOT

— SURVEY MUNICIPALITY ROAD

— SURVEY MUNICIPALITY CURB

— SURVEY MUNICIPALITY SIDEWALK

— SURVEY MUNICIPALITY DRIVE

— SURVEY MUNICIPALITY FENCE

— SURVEY MUNICIPALITY BOUNDARY

— SURVEY MUNICIPALITY WALL

— SURVEY MUNICIPALITY CONCRETE

— SURVEY MUNICIPALITY BRICK

— SURVEY MUNICIPALITY ASPHALT

— SURVEY MUNICIPALITY GRAVEL

— SURVEY MUNICIPALITY SAND

— SURVEY MUNICIPALITY SOIL

METRIC:

DISTANCES AND COORDINATES SHOWN ON THIS PLAN ARE IN METRES AND CAN BE CONVERTED TO FEET BY DIVIDING BY 0.3048.



Van Harten
SURVEYING INC.
LAND SURVEYORS AND ENGINEERS

1000
1000
1000
1000
1000

www.vanharten.com info@vanharten.com

Phone: 519-889-2800 Fax: 519-889-2801

2000-09-01